



## PLANTS

Roots of wetland plants can bind accumulated sediment and absorb excess nutrients.

The U.S. Environmental Protection Agency and the Department of Army are responsible for defining rules and governing waters of the United States, known as the Navigable Waters Protection Rule.

*This institution is an  
Equal Opportunity Provider.*

## WATER POLLUTION

Water pollution occurs when harmful substances such as chemicals or waste leached from landfills and faulty septic systems make their way into aquifers, lakes and streams, rendering the water unsafe for human use.

## INVERTEBRATES

Invertebrates are vital links in the aquatic food chain, conveying nutrients from plants and algae to larger organisms such as frogs, salamanders, reptiles, and birds.



Most waters become polluted by human activities such as discharging sewage and industrial waste into rivers and lakes, using harmful chemicals, and even littering.



Proper management of wetlands will enhance an important ecosystem for future generations.



## ABOUT THE WETLAND

This wetland is a manmade storm water retention basin designed so visitors can experience how plants and animals help clean our drinking water.

Clean water is essential to maintain organ health and allow blood to flow freely and transport oxygen and nutrients to every cell of the body.





NOTE: MAP IS NOT TO SCALE



BROADWAY

PROPOSED  
PARKING

(OLD JEFFERSON HWY)



G STREET

PROPOSED TRAIL

BELT AVE.

FITNESS TRAIL

LAKE EUFAULA

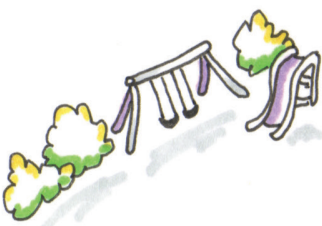
SELMON RD

MAIN ST.

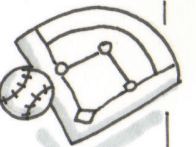
TO DALLAS



9



LAKE EUFAULA



SEE OUR WONDERFUL SPONSORS AT  
[www.eufaulawetlandpark.com](http://www.eufaulawetlandpark.com)